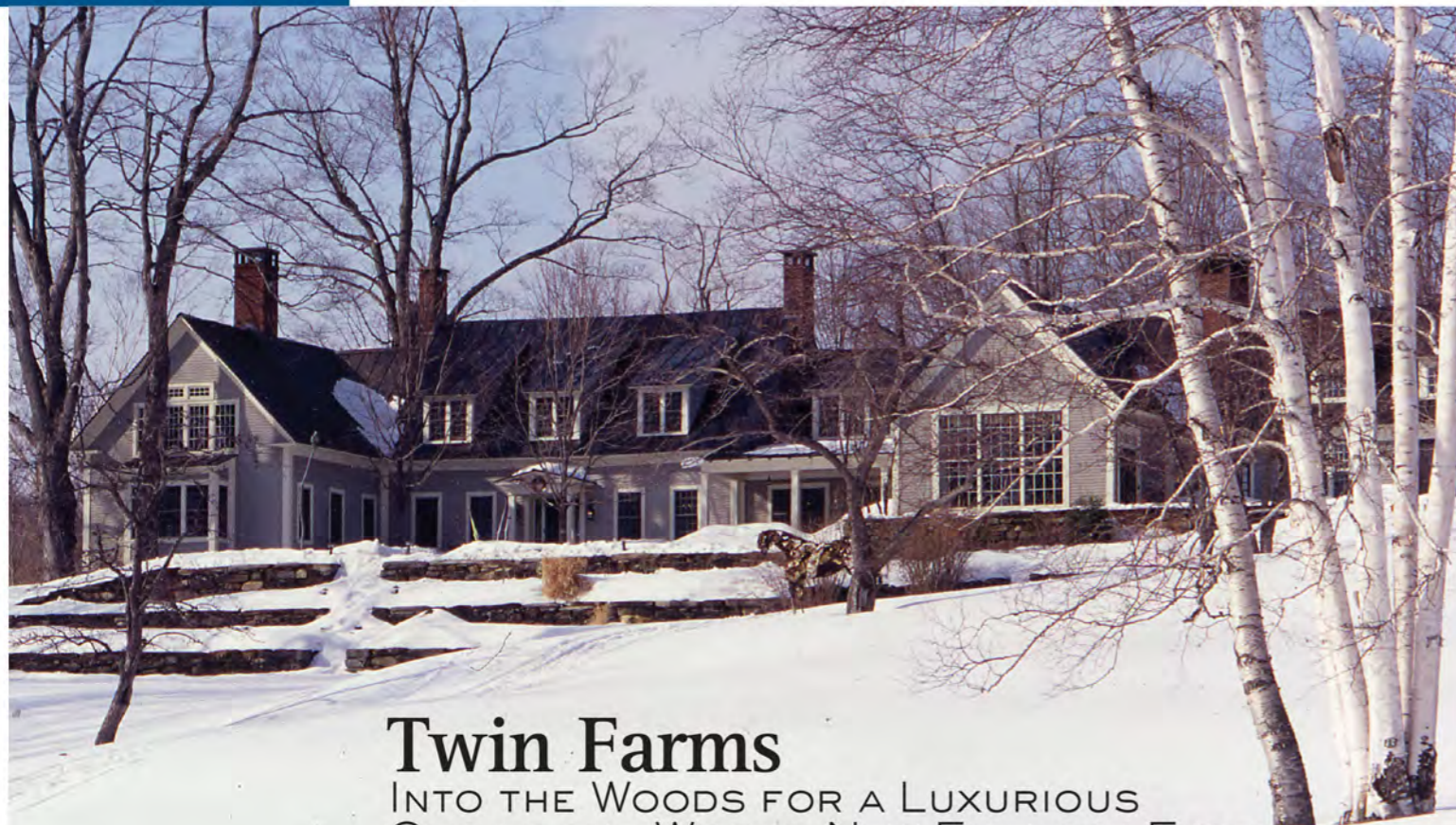


THE AUTHORITY ON LIFESTYLE

affluent®



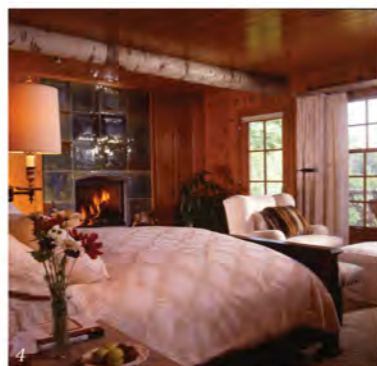
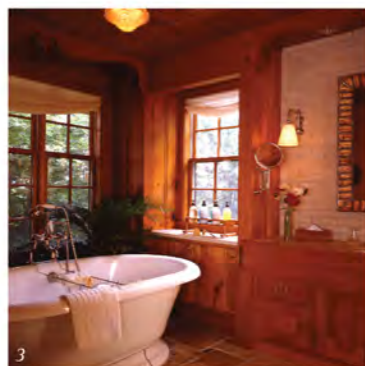
\$15.00



Twin Farms

INTO THE WOODS FOR A LUXURIOUS OUT OF THE WOODS NEW ENGLAND EXPERIENCE

By Madison Freeman



The spirit of Twin Farms, an exclusive country estate in Barnard, Vermont, set on 300 acres of wildflower meadows, forests, ancient gardens and private ponds, began in 1928. That was the year novelist Harry Sinclair Lewis, first to win the Nobel prize in literature, traversed Vermont in search of the perfect sanctuary for his fiancée, journalist Dorothy Thompson. Twin Farms soon became the couple's home, and has since served as sanctuary, retreat and hideaway for hundreds of other lovers, couples, stressed-out business execs and families. The original 1795-era farmhouse, which served as the famous writers' home, now houses gracious living and dining areas and six luxurious suites. One, Red's Room, is named for Sinclair who was nicknamed Red in his childhood; another, Dorothy's Room, is in honor of Thompson. And scattered around the property: ten free-standing cottages.

Barn Cottage is a Scandinavian fantasia of light woods, see-through fireplace, cushy down duvets and muted grays and blues, while Meadow Cottage is surprisingly all about Morocco. Think tented ceiling, mosaic-

tilled fireplace, step-down bed chamber (with wrought iron) and a deep soaking tub. The property's woodsy feel is reflected in both Perch – a fisherman's haven set above a small stream and complete with fish decoys and carvings, a copper bath tub and screened porch; and Treehouse, featuring an Adirondack-twig ceiling, stone fireplace and floor-to-ceiling windows. Each of the ten cottages is different from the other; and each so decadently luxurious and relaxing you may never want to leave.

But do.

Much of the beauty of this property and experience is its natural amenities: endless forest trails for walking and biking, ponds for fishing, tennis, swimming and croquet. Open 24-7 is a pub (serve yourself) and billiard room, complete with jukebox; and also a private Japanese-style furo (hot bath house) that couples perfectly with night sky and champagne. In winter, there's ice skating, snow shoeing and even a downhill ski slope with private ski Sherpa to transport you around from hill to hill.

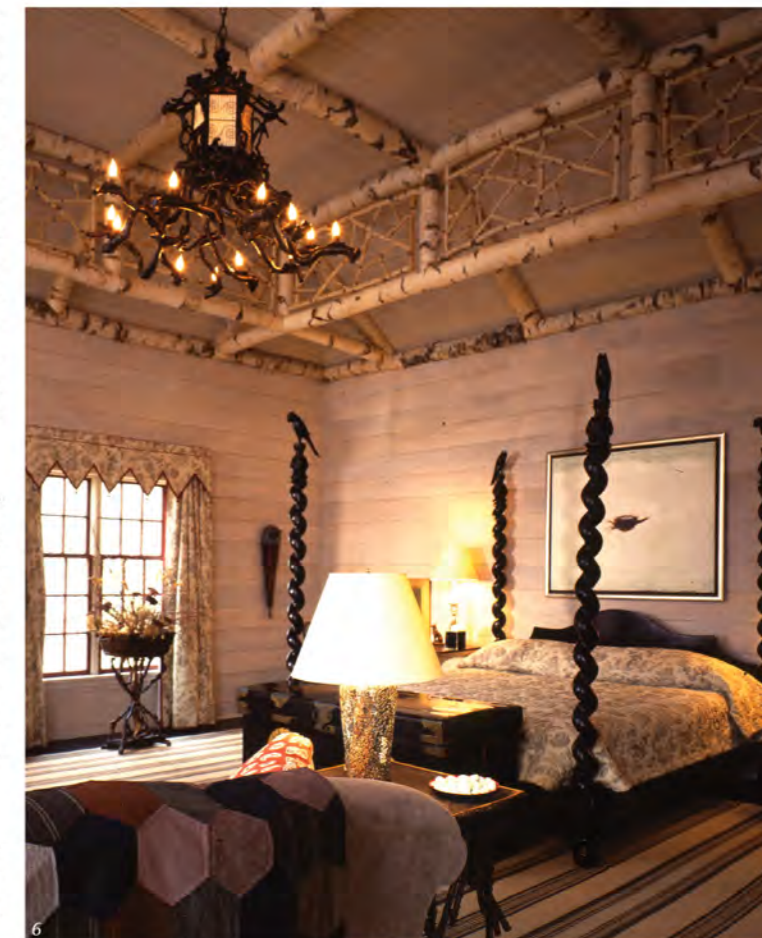
Spa time, too, is of note. Twin Farms' spa journey began in England where "nose" Richard Howard, a natural perfumer (and former chef), gained recognition for his Arcania Apothecary line of hand-mixed bath salts, body oils, lotions and creams. For years, Howard's exclusive spa products, laced with fresh flower buds and sprigs of herbs, were available only in England. But now, Twin Farms is home to the only spa (outside the UK) devoted exclusively to Arcania Apothecary products and treatments. For a few years, Twin Farms' small but luxurious Out of the Woods spa used various Arcania products and offered a small in-room amenity line. But recently Howard revamped the spa menu to feature treatments exclusively designed from his hand-mixed product line. Newest offerings include a cranberry body scrub/wrap/massage detox and decadent chocolate body rapture. Howard also reformulated the estate's in-room bath amenities (bath salts, oils, lotions, hand creams, shampoos and conditioners – all found in delightfully large bottles next to each room's oversized soaking tub).

The marriage between Howard and Twin Farms is just another example of the exclusive experience guests find at this historic country estate. Dining is also personalized. For starters, meals are served anytime, anywhere desired – from the cushy white duvet covers in your room to a picnic in the meadow to a private torch-lit dinner served outside in front of your own roaring bonfire. Ingredients (including Vermont's famed cheeses) are sourced locally, so are always fresh – from farm to table. The wine cellar features 26,000 bottles, and meals are always to guests' liking. That's because prior to arrival, a detailed survey of culinary likes and dislikes (right down to seasonings) is explored and recorded.

The customized experience at Twin Farms even extends to transport. Guests arriving by plane or train are met by Twin Farms staff and complimentary ground transfer to and from Burlington International Airport (BTV),

Manchester Boston Regional Airport (MHT) and Lebanon Airport (LEB) are included in the rate. Those choosing to drive the scenic route along winding roads and through white chapelled New England towns are greeted, and upon departure sent home, with an everlasting culinary memory – sandwiches, Vermont cheeses and fresh-from-the-oven chocolate chip cookies.

2010 rates range from \$1,300 to \$3,100 per night for two people includes all meals, beverages and full use of any on-site recreation and equipment. A service fee of 18% and Vermont state taxes are applied to all rates. Full property takeover bookings for house parties, celebrations and corporate events are available beginning at \$41,000 per night, maximum capacity 40 persons. For more information or to make a reservation, please call (800) 894-6327; email info@twinfarms.com or visit www.twinfarms.com.



1. The Main House at Twin Farms, a unique 1795-era converted farmhouse.
2. Retreat upstairs to your own cozy loft in Barn Cottage.
3. Relax in the double soaking tub found in the Chalet Cottage bathroom.
4. Tucked on the edge of a ski slope, enjoy magical views of Mount Ascutney in the Chalet bedroom.
5. A taste of Tuscany in Vermont in the Woods Cottage.
6. The feeling of the forest, with a view of woods from every window in the Treehouse.
7. A quintessential cabin the woods.
8. Both remote and quiet, Dorothy's Room displays a Russian flair.
9. One of many unique Arcania Apothecary's hand mixed line of fruit facials.
10. A selection of both French and Vermont artisanal cheeses.

